

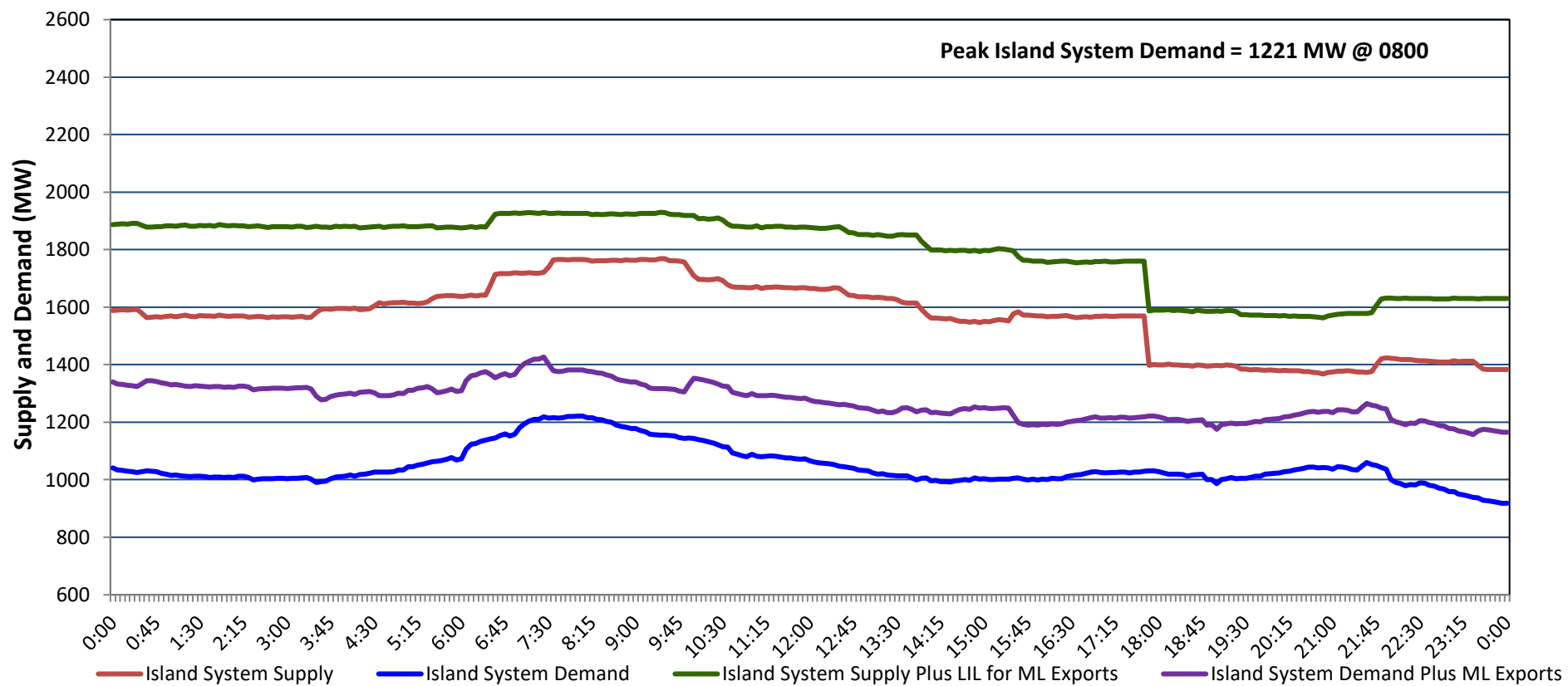
Newfoundland Labrador Hydro (NLH)

Supply and Demand Status Report Filed Wednesday, April 30, 2025

Section 1

Island Interconnected System - Supply, Demand & Exports

Actual 24 Hour System Performance For Tuesday, April 29, 2025



Island Supply Notes For April 29, 2025

- A
- As of 0816 hours, March 26, 2025, St. Anthony Diesel Plant available at 8.85 MW due to forced derating (9.7 MW).
- B
- As of 0800 hours, March 30, 2025, Holyrood Unit 3 unavailable due to planned outage 130 MW (150 MW).
- C
- As of 0823 hours, March 31, 2025, Bay d'Espoir Unit 1 unavailable due to planned outage (76.5 MW).
- D
- As of 0823 hours, March 31, 2025, Bay d'Espoir Unit 2 unavailable due to planned outage (76.5 MW).
- E
- As of 1419 hours, April 22, 2025, Holyrood Unit 2 available at 115 MW due to forced derating (170 MW).
- F
- As of 1032 hours, April 23, 2025, Holyrood Combustion Turbine unavailable due to planned outage (123.5 MW).
- G
- At 1748 hours, April 29, 2025, Holyrood Unit 1 available but not operating (170 MW).

Section 2

Island Interconnected System - Supply, Demand & Outlook

Wed, Apr 30, 2025	Island System Outlook <sup>2</sup>	Seven-Day Forecast	Island System Daily Peak Demand (MW)	
			Forecast <sup>8</sup>	Adjusted <sup>6</sup>
Island System Supply: <sup>4</sup> NLH Island Generation: <sup>3,7</sup> NLH Island Power Purchases: <sup>5</sup> NP and CBPP Owned Generation: LIL/ML Net Imports to Island: <sup>9</sup>	1,511 MW 1,040 MW 105 MW 210 MW 156 MW	Wednesday, April 30, 2025	1,120	1,037
		Thursday, May 1, 2025	1,110	1,060
		Friday, May 2, 2025	1,170	1,120
		Saturday, May 3, 2025	1,030	980
		Sunday, May 4, 2025	955	905
		Monday, May 5, 2025	910	860
		Tuesday, May 6, 2025	925	875
7-Day Island Peak Demand Forecast:	1,170 MW			

Island Supply Notes For April 30, 2025

- Notes:
1. Generation outages for running and corrective maintenance are included. These are not unusual for power system operations. They generally do not impact customer supply. Hydro schedules outages to system equipment whenever possible to coincide with periods when customer demands are low and sufficient supply reserves are available. However, from time to time equipment outages are necessary and reserves may be impacted.
2. As of 0800 Hours.
3. Gross continuous unit output.
4. Gross output from all Island sources (including Note 3).
5. NLH Island Power Purchases include: ML Imports, Exploits Generation, Rattle Brook, Star Lake, Wind Generation and capacity assistance (when applicable).
6. Adjusted for interruptible load and the impact of voltage reduction when applicable.
7. Due to limitations inherent in the design of combustion turbines, the output of combustion turbines may be reduced in the event that ambient temperatures exceed the threshold required for full rated output. This threshold is dependent on the design of each turbine.
8. Does not include ML Exports.
9. LIL Import sunk in the Island System. Actual LIL flows will be restricted by various system conditions including, but not limited to, Island Load, ML Exports and Avalon Unit status.

Section 3

Island Peak Demand and Exports Information

Previous Day Actual Peak and Current Day Forecast Peak

Tue, Apr 29, 2025	Island Peak Demand <sup>10</sup>	8:00	1,221 MW
	Exports at Peak		161 MW
	LIL Net Imports to Island		2,051 MWh
Wed, Apr 30, 2025	Forecast Island Peak Demand		1,120 MW

- Notes:
10. Island Demand is supplied by NLH generation and purchases, LIL Imports plus generation owned and operated by Newfoundland Power and Corner Brook Pulp & Paper (Deer Lake Power, DLP).